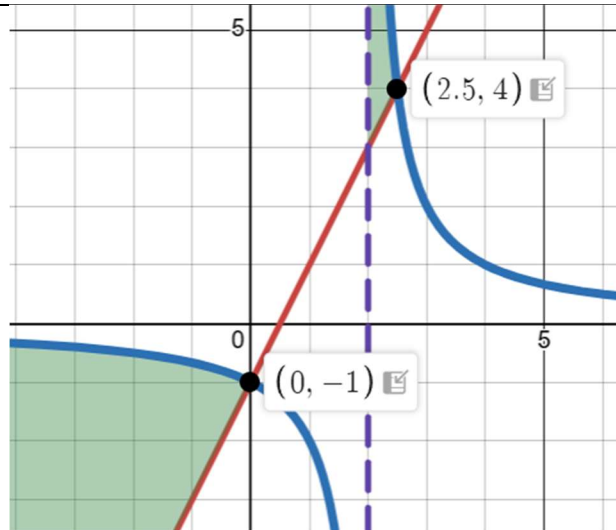


Question	Sketch	Solution
1		$-2 < x < 0$ $x > 2$
2		$x < 3$ $0 < x < 1$
3		$x < 0$ $2 < x < 4$

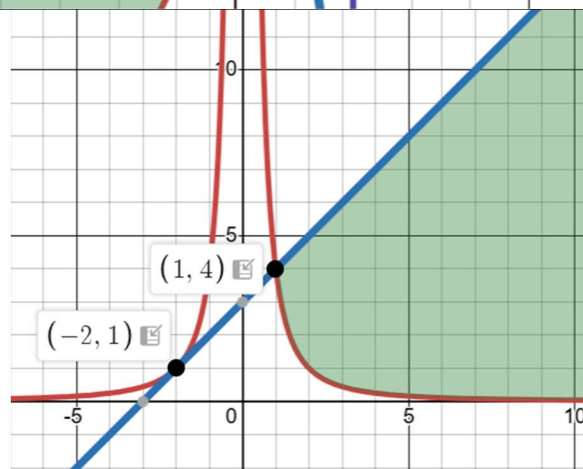
4



$$x \leq 0$$

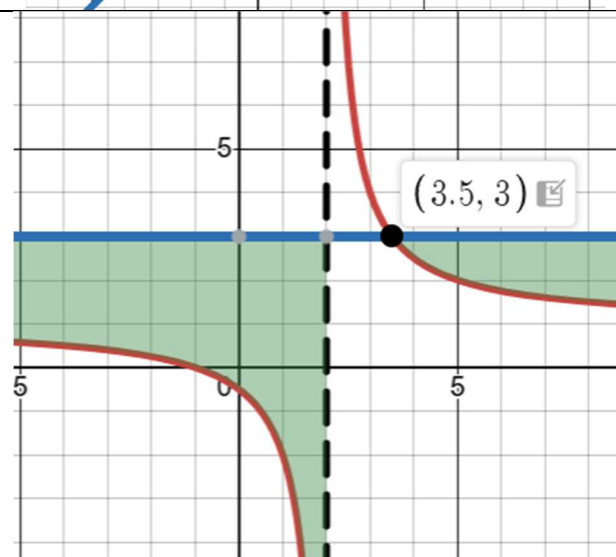
$$2 < x \leq 2.5$$

5



$$x > 1 \text{ only}$$

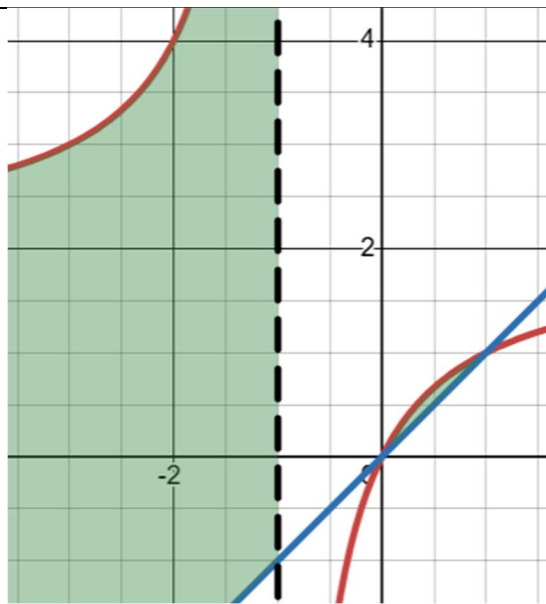
6



$$x < 2$$

$$x \geq 3.5$$

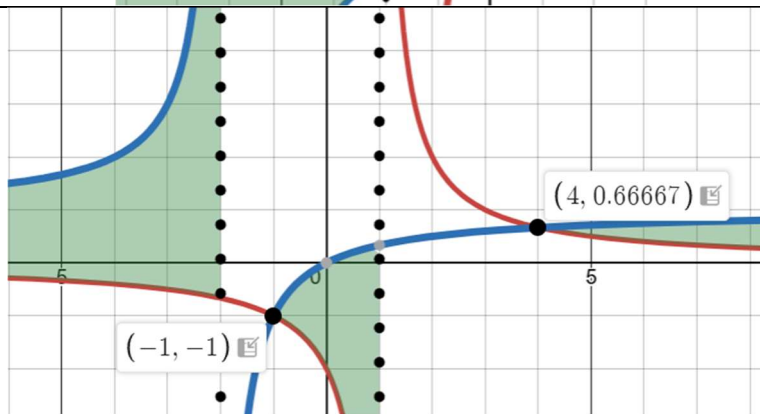
7



$$x < -1$$

$$0 < x < 1$$

8



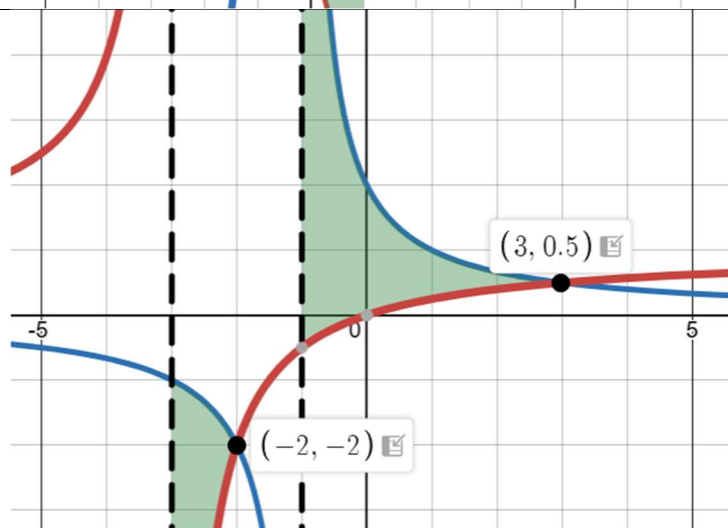
3 regions so 3  
inequalities

$$x < -2$$

$$-1 \leq x < 1$$

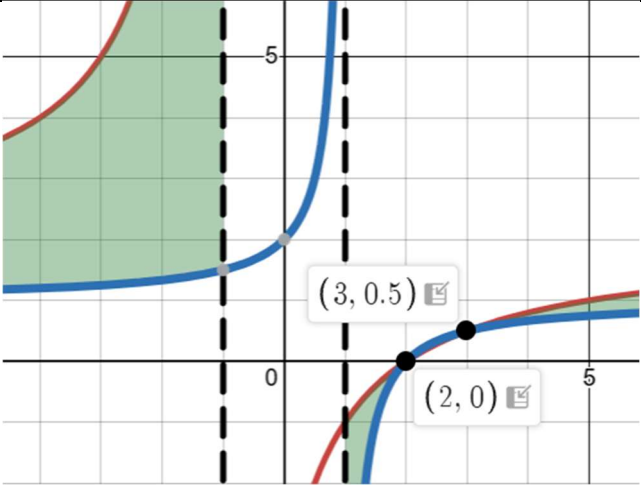
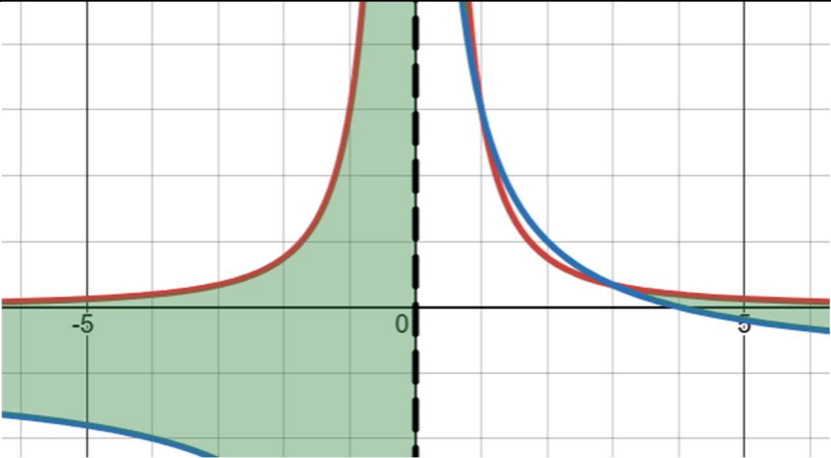
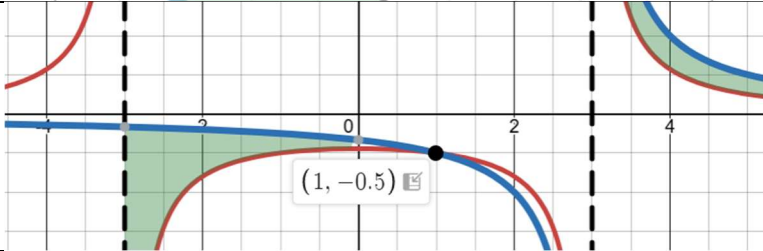
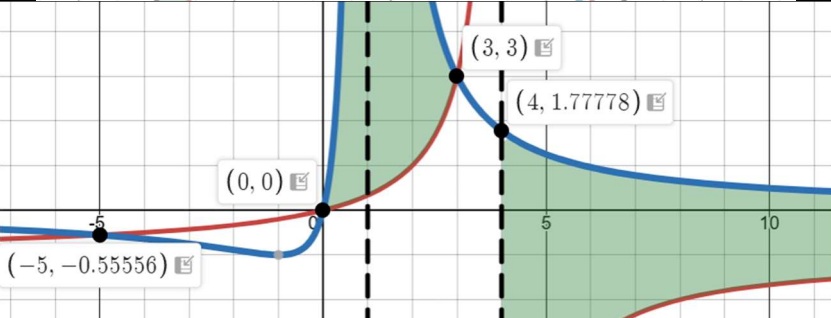
$$x \geq 4$$

9

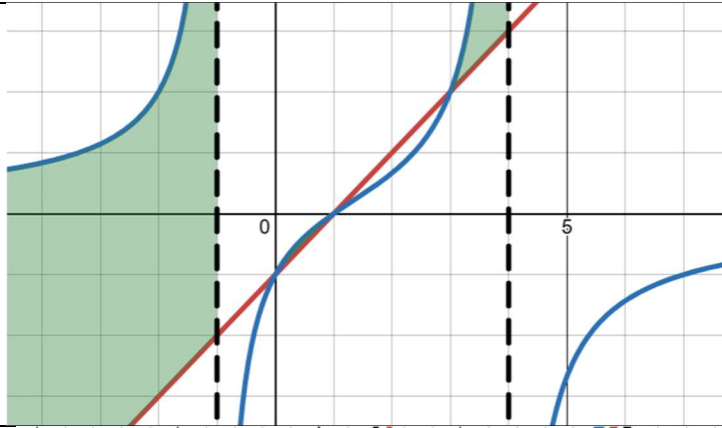


$$-3 < x < -2$$

$$-1 < x < 3$$

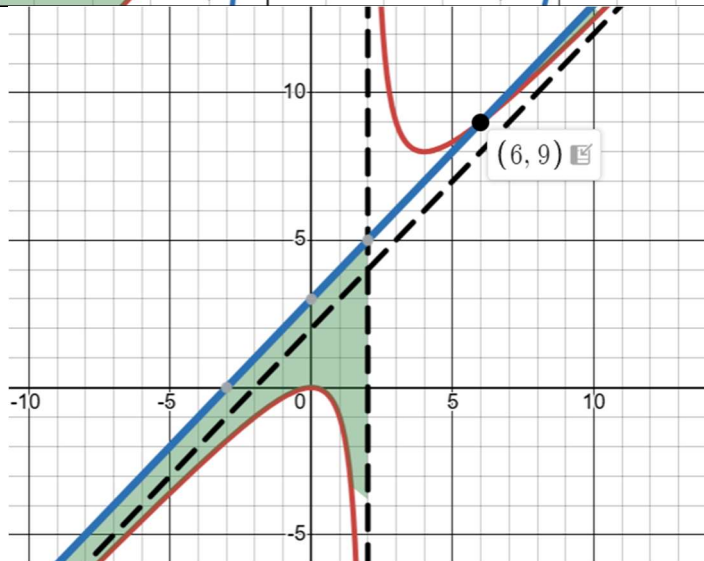
10	 <p>Note the crossover between <math>x = 2</math> and <math>x = 3</math></p>	$x < -1$ $1 < x \leq 2$ $x \geq 3$
11		$x < 0$ $0 < x < 1$ <p><i>Note that we write these separately as there's a break in the graph at <math>x = 0</math></i></p> $x > 3$
12		$-3 < x < 1$ $x > 3$
13		$x < -5$ $0 < x < 3$ $x > 4$

14



$$\begin{aligned} x &< -1 \\ 0 &\leq x \leq 1 \\ 3 &\leq x < 4 \end{aligned}$$

15



$$\begin{aligned} x &< 2 \\ x &> 6 \end{aligned}$$